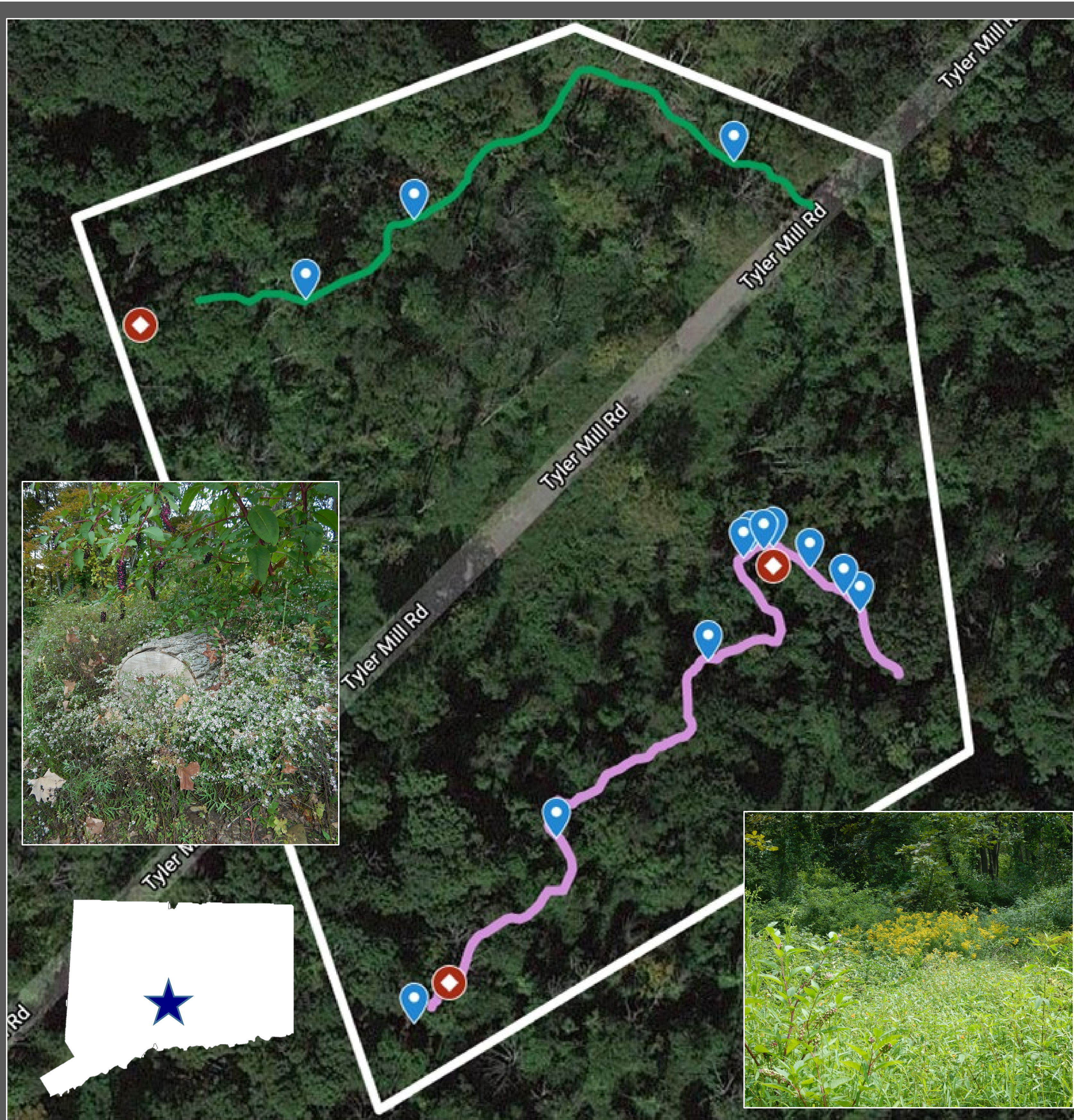


# Plant Community Change Over Time in Tyler Mill Preserve

Benjamin Motmans<sup>1</sup>, Michael Lowit<sup>1</sup> & Dianne Saunders<sup>2</sup>

<sup>1</sup> Lyman Hall High School <sup>2</sup> Wallingford Conservation Commission



## Background

- Tyler Mill is a roughly 1,400-acre wooded preserve in Wallingford, CT
- The preserve was purchased by the town for conservation and as a future water supply
- A tornado and microburst storm event on May 15, 2018 damaged much of the preserve
- Our project documents the changes in the Tyler Mill plant community after the storm event
- Our goal was to provide the preserve stewards with information about the changes that occurred

## Methods

- We documented **plant succession** in a section of Tyler Mill following the storm event
- We recorded a **360-degree photo** of the same area in the preserve once a month for 8 months
- We used **Track-kit** to map several trails and plot points of interest in the preserve
- We compiled our data into an **ArcGIS StoryMap** to convey the information to the Wallingford Conservation Commission

## The Take-Away

- We documented the change in the plant community following the tornado and microburst storm event
- The damage to the plant community allowed for invasive plant species to infiltrate the ecosystem
- We were able to take this information and share it with members of our community



Access our StoryMap  
<https://arcg.is/1OOPTj>



**UConn**  
NATURAL RESOURCES AND  
THE ENVIRONMENT

 Natural Resources Conservation  
**Academy**

 **CLEAR**