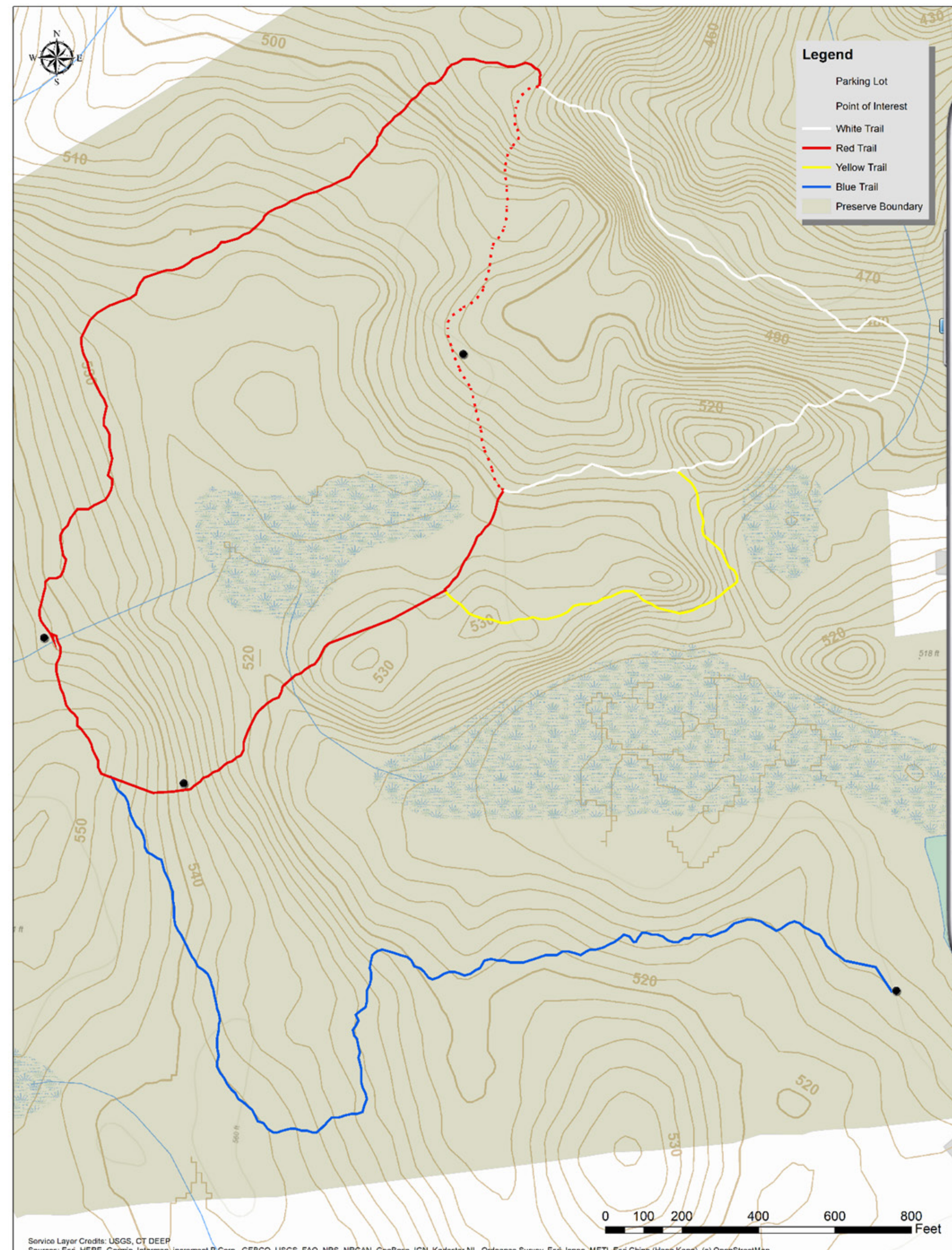


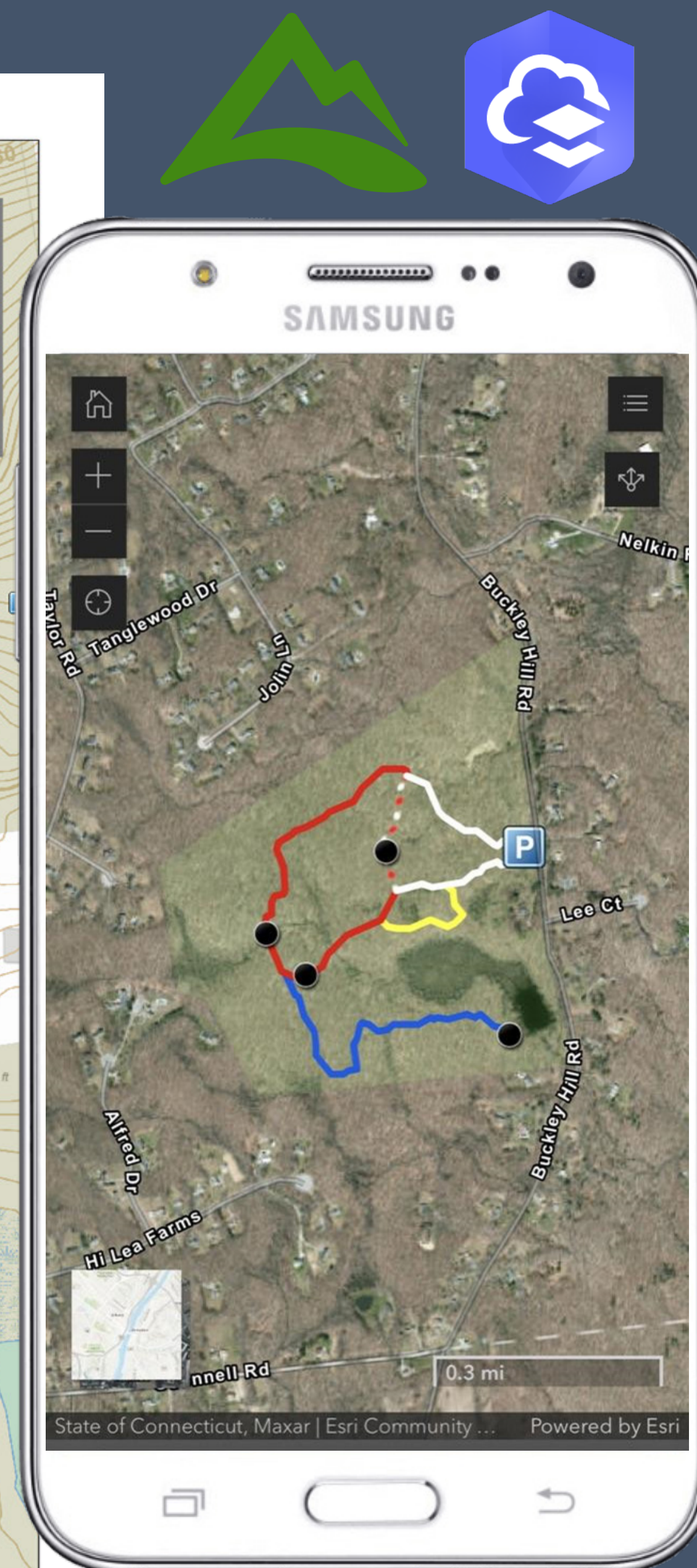
Mapping Colchester's Bulkeley Hill Preserve

Daniel Blanda¹ & Chris Balfanz

¹Bacon Academy



Printed trail map that will be posted at the trailhead kiosk



Web & mobile-friendly trail map that can be accessed by scanning our QR code



Introduction

- Colchester Land Trust is dedicated to preserving open space
- Dan has been a student board member on the CLT for two years
- Bulkeley Hill is a 130-acre preserve that supports a variety of wildlife as well as a 23-acre wetland system comprised of a small pond, intermittent streams, & vernal pools
- We chose this project because we were interested in trail mapping and knew CLT needed an updated map of the preserve

Methods

- We first mapped the trails and points of interest along the trails using the **AllTrails** mobile app
- We then exported the track and point data from AllTrails and imported it into **ArcGIS Online** to create a mobile-friendly web app trail map that can be accessed on a phone, tablet, or computer
- Our final step will be to display a printed version of the map on a kiosk at the property's trailhead

The Take-Away

- We learned how to record data points and construct an online map while working together to complete a common goal
- Both the printed and online maps will benefit members of the community and other visitors of the preserve by improving access to, and awareness of, the trails, helping hikers stay safe

