

Raising Public Awareness of the Wilcox Property

NRCA Student: Julia Isaacson¹

Community Partners: Kathleen Miller² and Elisabeth Holder³

¹ Middletown High School; ² Wesleyan University; ³ Middletown Conservation Commission

Introduction

Trail maintenance is accomplished by re-blazing trails, improving drainage, and removing overgrown vegetation or invasive from the trails. These practices provide user safety, access, and convenience, while protecting adjacent resources and preserving trail investment⁴.

Invasive plant species cause harm to an ecosystem. Since many invasive species are not native to their new environment the lack of a natural predator enables them to reproduce and spread quickly. If left unchecked invasive plants can cause tremendous damage to an ecosystem and possibly wipe out key components of a healthy ecosystem⁵.

Purpose

The Wilcox property located in Middletown, CT is widely unknown by most of the town's community. This unfamiliarity has lead to lack a of funding for maintenance. In this project, we seek to:

1. Create a map to describe important features of Wilcox for future use.
2. Clean up Wilcox of trash and other threats to the property's environment.
3. Organize community event to promote the use and maintenance of Wilcox.

Figure 1A: Conservation area sign for the Wilcox Conservation Area in Middletown, CT.

Figure 1B: Julia Isaacson walking along the blue-white trail looking for possible waypoints.

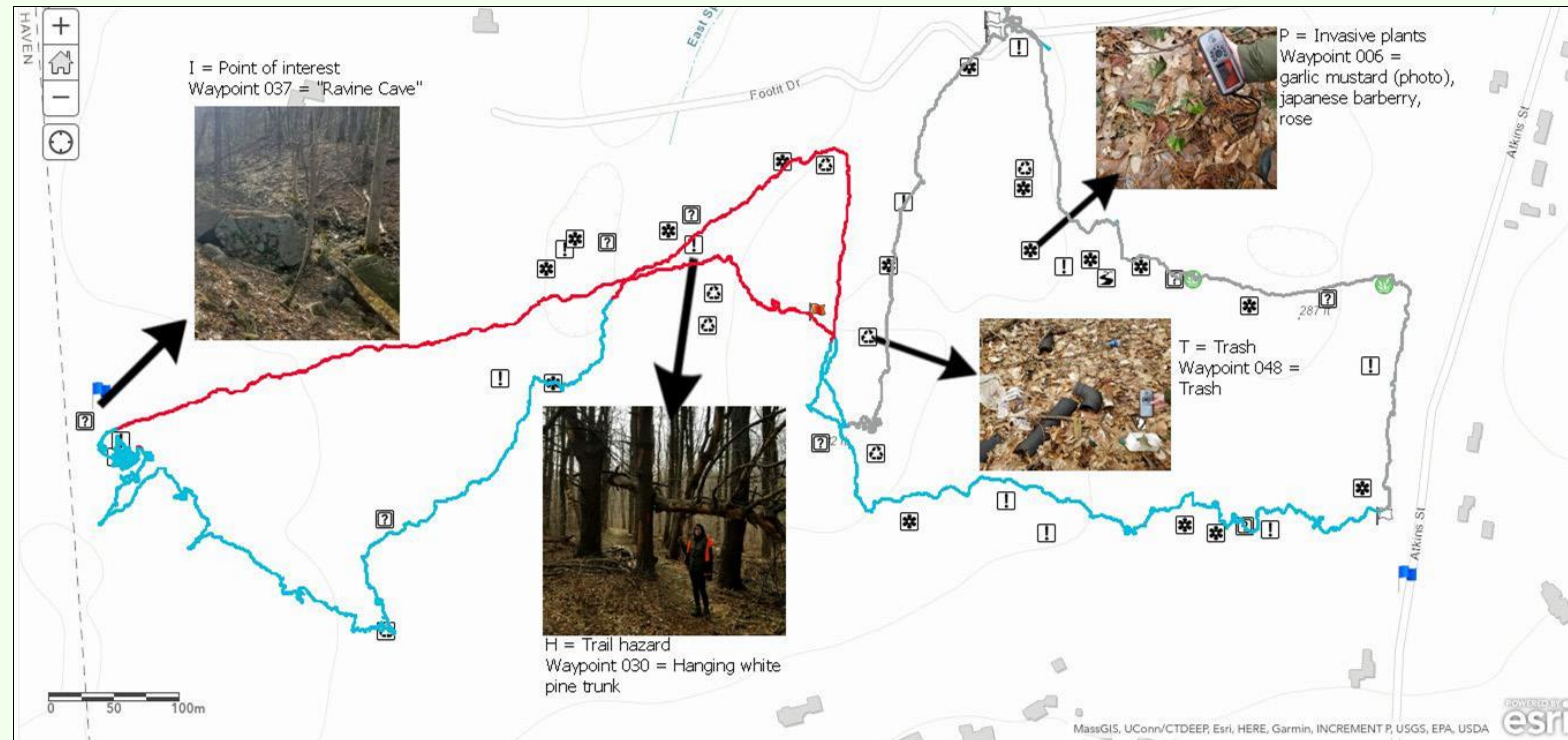
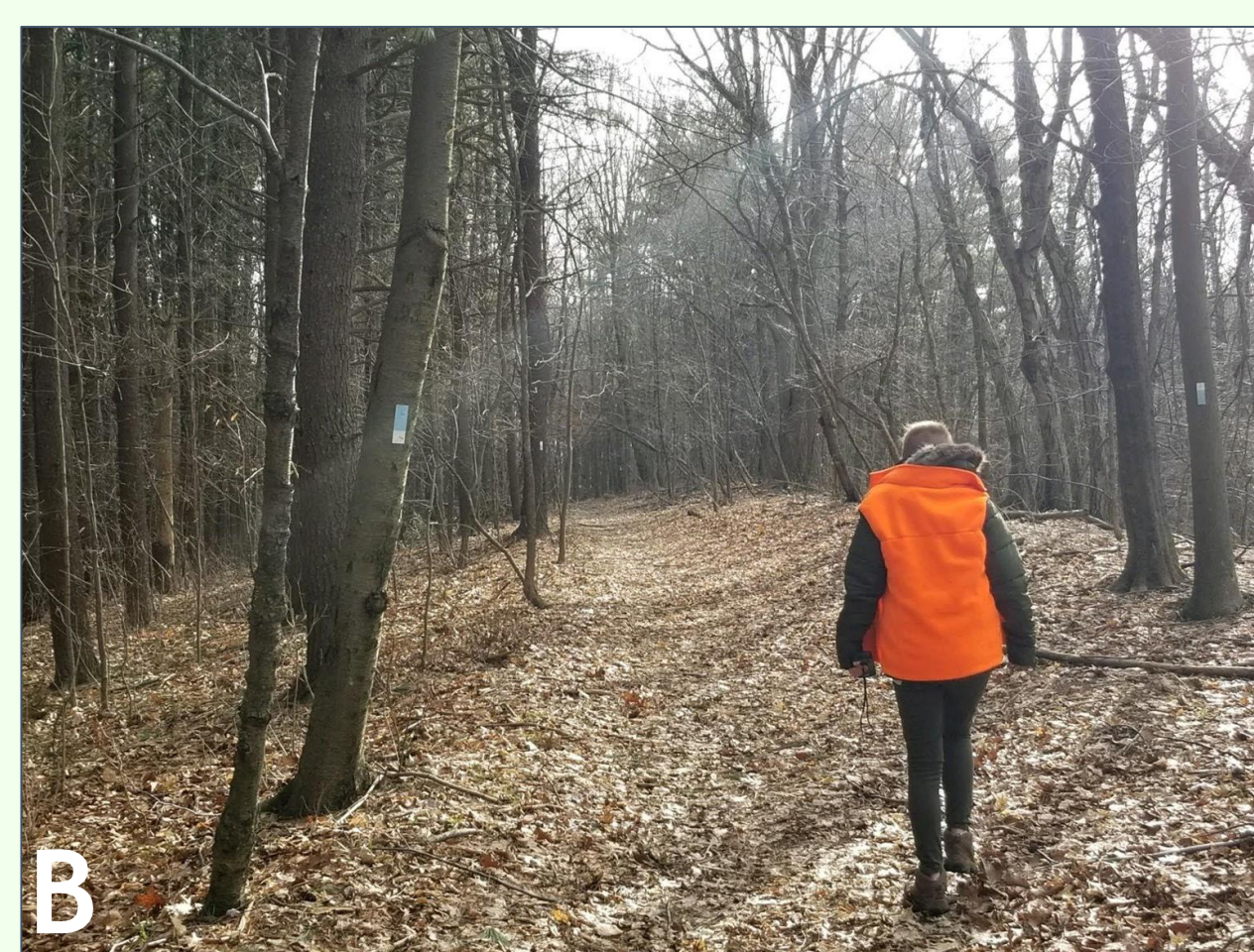






Figure 2: The interactive map we created of the Wilcox property in Middletown, CT. Each waypoint corresponds to a location where specific features will be targeted during a community event that will be held in May 2019.

Methods

- ★ During the fall and winter of 2018-2019, we went out to the Wilcox property to take GPS waypoints on specific features. Waypoints were noted on a notebook as they were inputted into the GPS.
 - Waypoints were labeled T,H,I, and P:
 - T (): trash and debris
 - H (): trail hazards like dead hanging trees
 - I (): points of interest
 - P (): invasive species
- ★ We uploaded the waypoints from the Garmin GPS unit to ARCGIS online and created an interactive map (Figure 2)

References

- ⁴ Invasive Species. (n.d.). Retrieved January 26, 2019, from The National Wildlife Federation. <https://www.nwf.org/Educational-Resources/Wildlife-Guide/Threats-to-Wildlife/Invasive-Species>
- ⁵ Management. (n.d.). Retrieved January 26, 2019, from The National Park Service https://www.nps.gov/noco/learn/management/upload/NCT_CH9.pdf

Acknowledgements

Thanks goes out to Kathleen Miller, Elisabeth Holder, the NRCA, Rebecca Isaacson, and Stephanie Russell for making this project possible.

Planning the Community Event

We plan to hold a community event at Wilcox to promote interest in the property. During this event, we plan to conduct a guided tour where we will point out the interesting features of the trails. We will also invite volunteers to help rehabilitate Wilcox through a trail cleanup. Maintenance efforts will include removal of invasive plants, trail hazards, and trash. This event is projected to occur May 18, 2019.

Conclusion

Our hope for this project is to promote the use of the Wilcox property in the Middletown community. Ideally this map and community event will help better maintain the trails throughout Wilcox, and increase future funding opportunities.

Check out our interactive map!

<https://arcg.is/0qiS41>