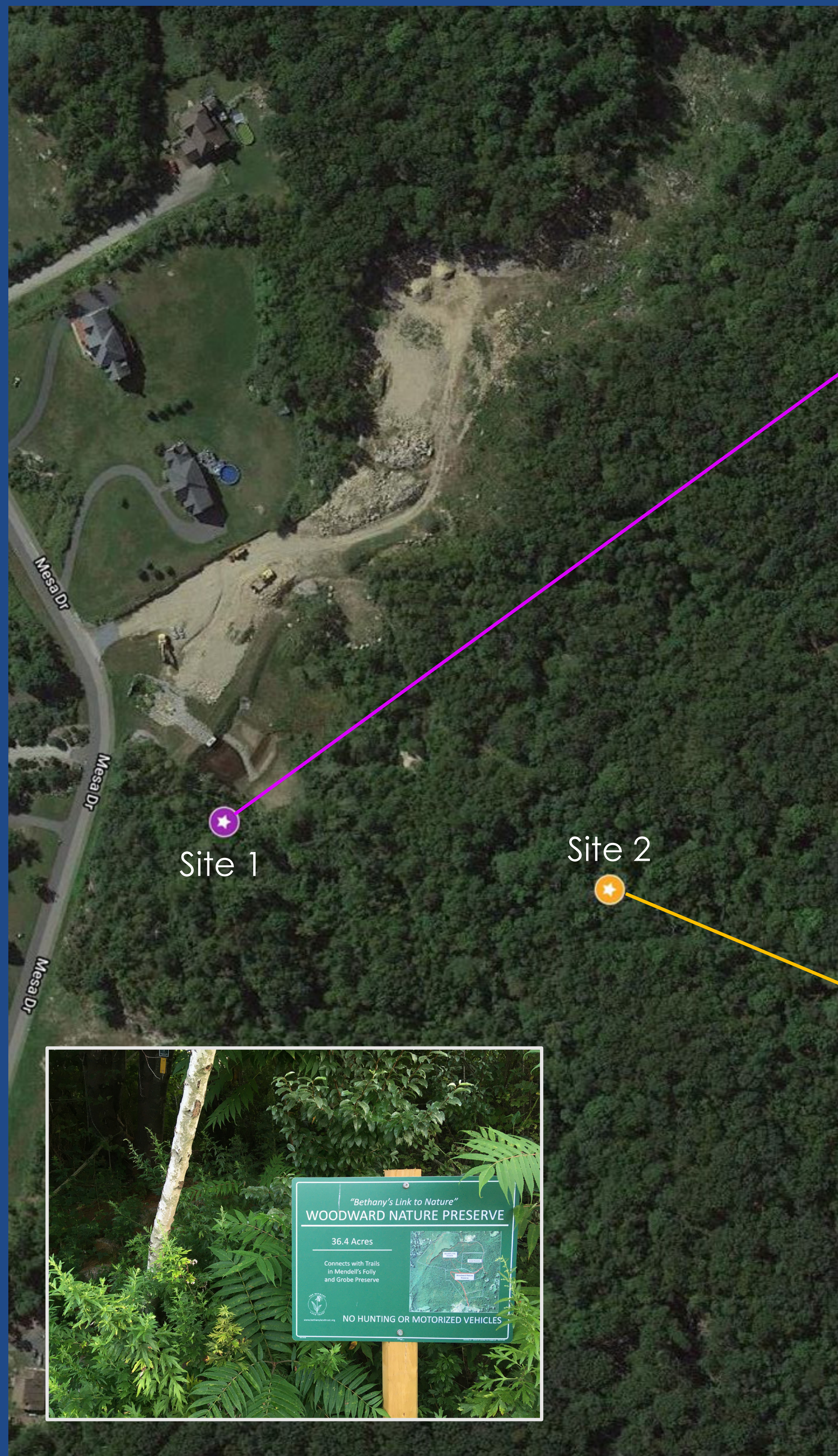


Woodward Nature Preserve Bird Survey

Alice Xu¹ & Angela Capinera²

¹Amity Regional High School & ²Stratford Conservation Commission



Introduction

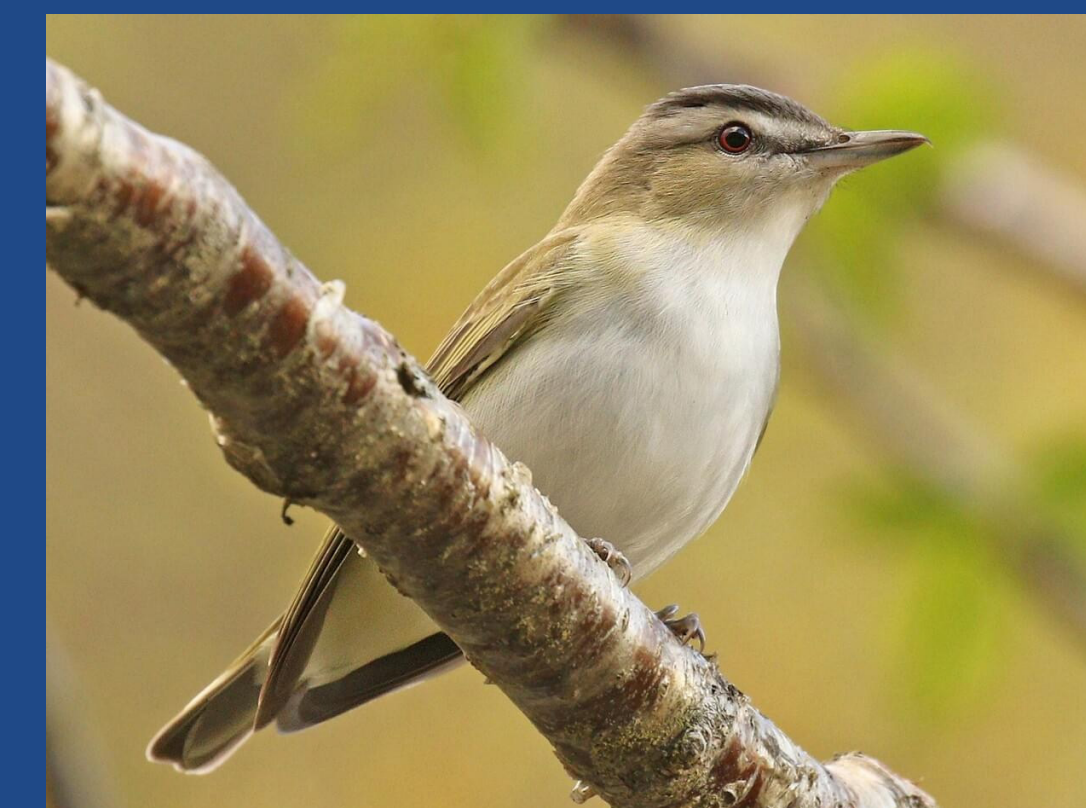
- In the past few years, Alice has seen an increase in construction in her Bethany, CT neighborhood and was interested in how it might affect local wildlife.
- The goal of our project was to explore how the presence of construction activities might affect wildlife, specifically birds, at Bethany Land Trust's Woodward Nature Preserve.
- Site 1 (★) was ~150 feet from the street near a man-made water basin, partway into the forest.
- Site 2 (★) was ~350 feet from the street, much farther into the forest and away from the construction.

Methods

- We surveyed for birds at the two sites on August 25th and 26th, 2021.
- We remained silent during the 5-minute survey periods, counting the total number of birds heard.
- We recorded weather conditions, noise, etc. in Epicollect and used Merlin Bird ID to identify birds by call.
- On 8/25, active construction could be heard from both locations, however it was louder at Site 1.
- On 8/26, construction had not yet begun, so it could not be heard at either survey site.

The Take-Away

- On the first survey day, more birds and bird species were present farther away from the construction site. However, on the second day, more birds and bird species were present at Site 2, closer to construction.
- These findings have led us to infer that the birds avoided the area near the construction site when it was active, instead choosing to go farther into the forest where the noises were quieter.
- On the second day when construction noises were not heard, the birds may have been attracted to the water source at Site 1.



adult red-eyed vireo
photo by Ryan Schain, 2017



adult tufted titmouse
photo by Darlene Friedman, 2015

- This project can help people in our community learn more about bird behavior and how the presence of construction activities can affect them.